

Maximizing the Profit of a Business

Math 1010 Intermediate Algebra Group Project

In this project your group will solve the following problem:

A manufacturer produces the following two items: computer desks and bookcases. Each item requires processing in each of two departments. Department A has 55 hours available and department B has 39 hours available each week for production. To manufacture a computer desk requires 4 hours in department A and 3 hours in department B while a bookcase requires 3 hours in department A and 2 hours in department B. Profits on the items are \$72 and \$23 respectively. If all the units can be sold, how many of each should be made to maximize profits?

Let X be the number of computer desks that are sold and Y be number of bookcases sold.

Let: $x = \#$ of Desks

$y = \#$ of Bookcases

1. Write down a linear inequality for the hours used in Department A

$$A \left\{ \begin{array}{l} \text{Time Spent On Desks} + \text{Time Spent On Bookcases} = \text{Total Time for Dept. A} \\ 4x + 3y \leq 55 \end{array} \right.$$

2. Write down a linear inequality for the hours used in Department B

$$B \left\{ \begin{array}{l} 3x + 2y \leq 39 \end{array} \right.$$

There are two other linear inequalities that must be met. These relate to the fact that the manufacturer cannot produce negative numbers of items. These inequalities are as follows:

$$x \geq 0, y \geq 0$$

3. Next, write down the profit function for the sale of X desks and Y bookcases:

$$P(x, y) = (72x + 23y)$$

Total Profit

You now have four linear inequalities and a profit function. These together describe the manufacturing situation. These together make up what is known mathematically as a linear programming problem.

Write all of the inequalities and the profit function together below. This is typically written one on top of another, with the profit function last.

$$4x + 3y \leq 55$$

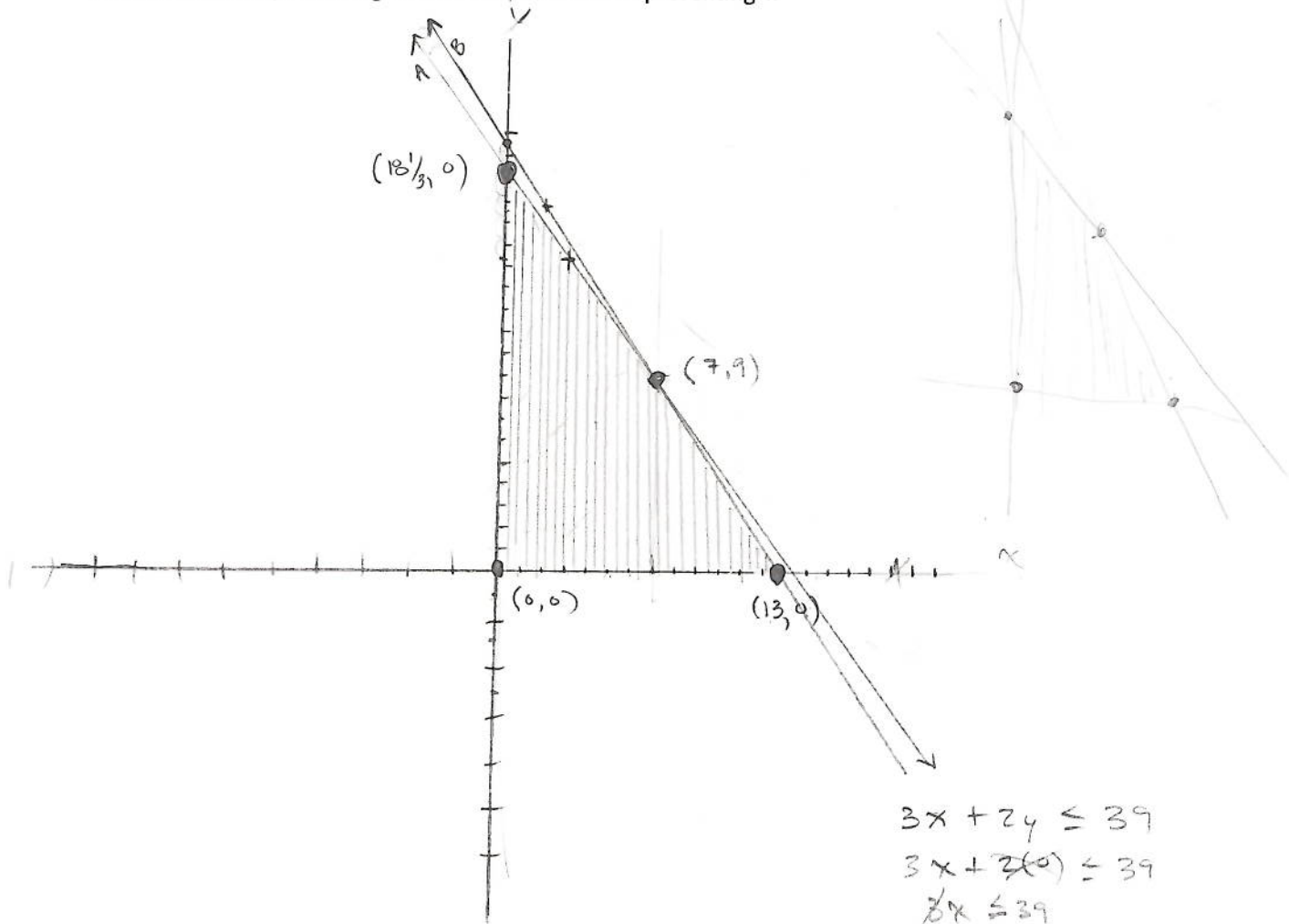
$$3x + 2y \leq 39$$

$$x \geq 0, y \geq 0$$

$$P(x, y) = (72x + 23y)$$

Total Profit

4. To solve this problem, you will need to graph the **intersection** of all four inequalities on one common XY plane. Do this on the grid below. Have the bottom left be the origin, with the horizontal axis representing X and the vertical axis representing Y.



intersect: (7, 9)

$$y = mx + b$$

(0,0)

$$A: 4x + 3y \leq 55$$

$$B: 3x + 2y \leq 39$$

$$x \geq 0, y \geq 0$$

$$P(x, y) = (72x + 23y)$$

total profit

$$y \leq -\frac{4}{3}x + 18\frac{1}{3}$$

$$y \leq -\frac{3}{2}x + 19\frac{1}{2}$$

$$3x + 2y \leq 39$$

$$3x + 2(0) \leq 39$$

$$\frac{3x}{3} \leq \frac{39}{3}$$

$$x \leq 13$$

$$\begin{matrix} 4x + 3y \leq 55 & \times 2 \\ 3x + 2y \leq 39 & \times 3 \end{matrix}$$

$$\begin{matrix} 8x + 6y \leq 110 \\ -9x - 6y \leq -117 \end{matrix}$$

$$8x + 6y \leq 110$$

$$-9x - 6y \leq -117$$

$$\frac{-x}{-1} \leq \frac{-7}{-1}$$

$$x \leq 7$$

$$3(7) + 2y \leq 39$$

$$21 + 2y \leq 39$$

$$-21 \quad 21$$

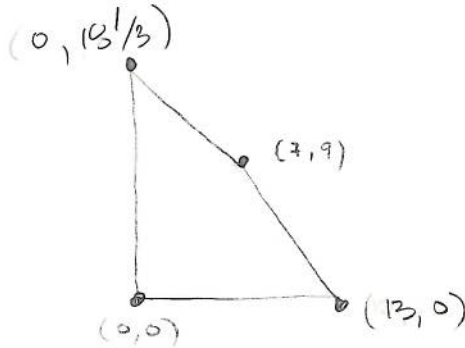
$$\frac{2y}{2} \leq \frac{18}{2}$$

$$y \leq 9$$

5. The above shape should have 4 corners. Find the coordinates of the ordered pairs that make up these corners. For the intersection of the two slanted lines you will have to solve the 2 by 2 system made up of their equations.

see graph on problem 4.

$$(0, 18\frac{1}{3}), (0, 0), (13, 0), (7, 9)$$



6. The next thing to do is to plug each of the points you found in part 5 into the profit function to determine which ordered pair gives the maximum profit. Do this and write a sentence describing how many of each type of furniture you should build and sell and what is the maximum profit you will make.

$$P(x, y) = 72x + 23y$$

Maximizing B:

$$P(0, 18\frac{1}{3}) = 72(0) + 23(18\frac{1}{3})$$

$$P(0, 18\frac{1}{3}) = \$421.66$$

{ Build 0 desks & 18 1/3 bookcases
to earn \$421.66

No Production:

$$P(0, 0) = 72(0) + 23(0)$$

$$P(0, 0) = \$0$$

don't build don't earn

Maximizing A:

$$P(13, 0) = 72(13) + 23(0)$$

$$P(13, 0) = \$936$$

{ Build 13 desks and 0 bookcases
to earn \$936

Both:

$$P(7, 9) = 72(7) + 23(9)$$

$$504 + 207$$

$$P(7, 9) = \$711$$

Build 7 desks and 9 bookcases
to earn \$711

7. Reflective Writing.

Did this project change the way you think about how math can be applied to the real world? Write one paragraph stating what ideas changed and why. If this project did not change the way you think, write how this project gave further evidence to support your existing opinion about applying math. Be specific.

This project connected real world application to the kind of math applied in 1010 and beyond. This is the kind of math accounting could use in production settings. For example we have 36 injection molding machines that make medical devices. We could use this kind of math to determine what size of press yields the most per hr. when we have 2 competing jobs using the same machine.